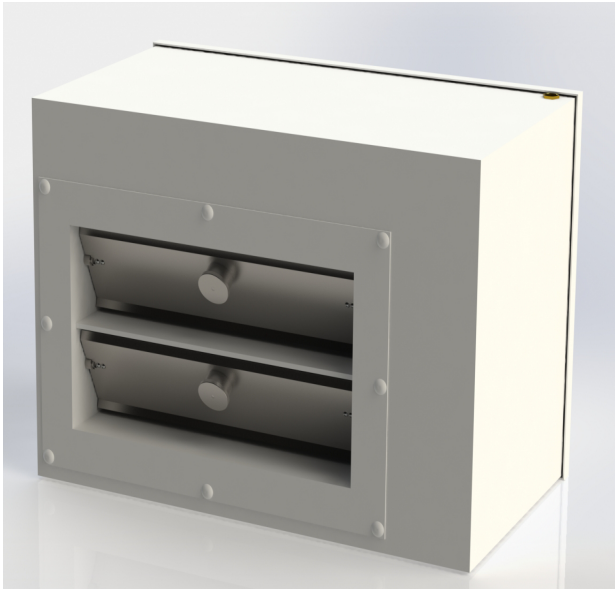


Type 100LF CFS Data Sheet



Features

- Air pressure stabiliser incorporating a fire/smoke damper with a unit depth of 370mm
- Centrally located balance weight system for easy pressure adjustment
- Control of pressures between 5 & 50 Pa with an accuracy of +/- 1 Pa
- Up to 4 blades vertically
- CE marked silent closure Actionair Type 501 SmokeShield PTC
- Whole assembly 2 hour fire tested to BS476 Part 20
- Mode 5 (24V AC) or Mode 6 (230V AC) Belimo actuator
- RAL 9016 powder-coated carbon steel case with stainless steel blades and clip fix egg-crate grille as standard
- SteriTouch® antimicrobial protection applied as standard

Stabiliser Selection Procedure

1. Determine the required airflow in m³/s & pressure setting in Pascal's
2. Divide airflow into the flow factor (shown in Table A) & multiply answer by 320 to give required blade length in mm
3. Divide required blade length by 1-8, as appropriate, & round up to nearest standard blade length (shown in Table B)

Example

Select a stabiliser capable of handling 0.24 m³/s @ 25 Pa

$(0.24 \div 0.094) \times 320 = 817\text{mm}$ of required blade length
 $817\text{mm} \div 2$ (number of blades) = 409mm
 Round up to nearest blade length = 2 no. 430mm blades

Stabiliser Model Required = **100LF 430/2 CFS**

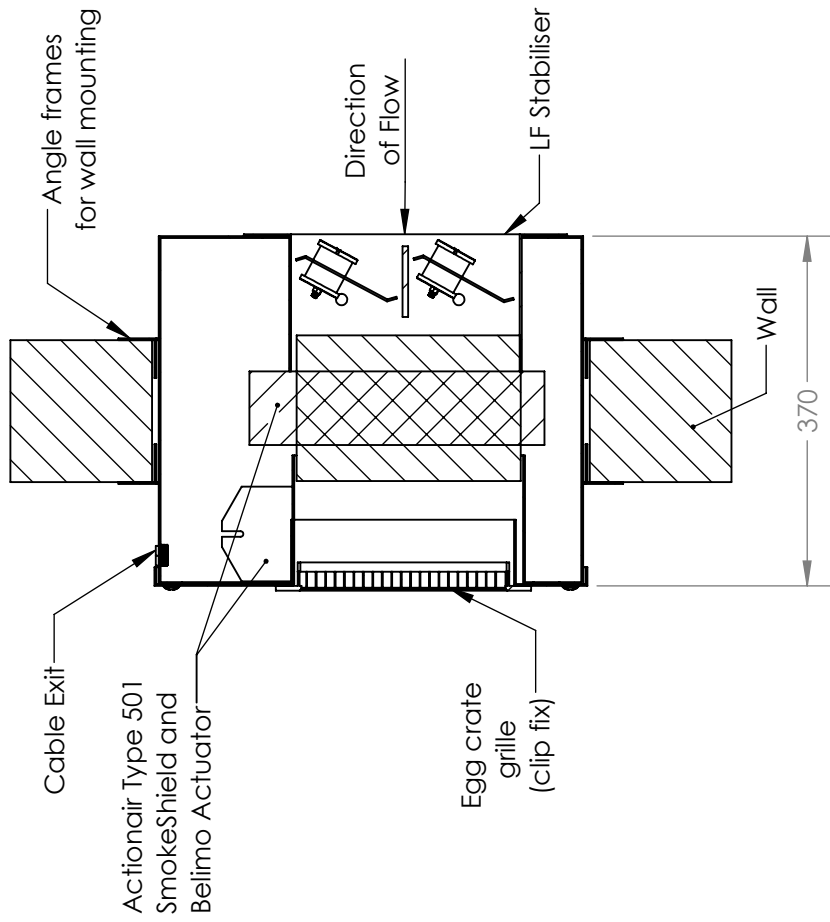
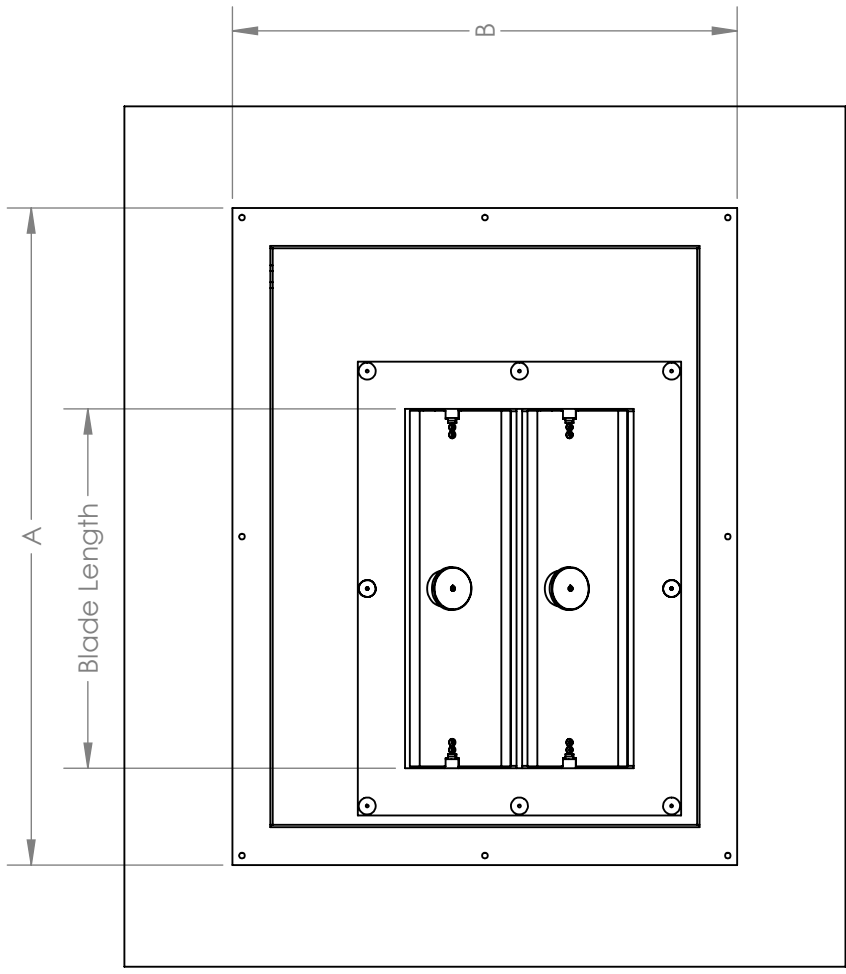
Where: 0.094 = flow factor for 25 Pa (Table A)
 430 = standard blade length (Table B)
 /2 = number of blades

Table A (Flow Factors)

Pressure (Pa)	Flow Factor
5	0.042
8	0.053
10	0.059
11	0.062
14	0.071
15	0.073
20	0.084
22	0.089
25	0.094
30	0.103
35	0.112
40	0.121
45	0.131
50	0.140

Table B (Blade Lengths in mm)

210	380
250	430
300	480
330	500



Stabiliser	Wall Opening		Overall Size	
	Aperture Width	Aperture Height	A	B
100LFA 210 - 500/1	Blade Length + 245	463	Blade Length + 315	534
100LFA 210 - 500/2		463		534
100LFA 210 - 500/3		587		658
100LFA 210 - 500/4		711		782